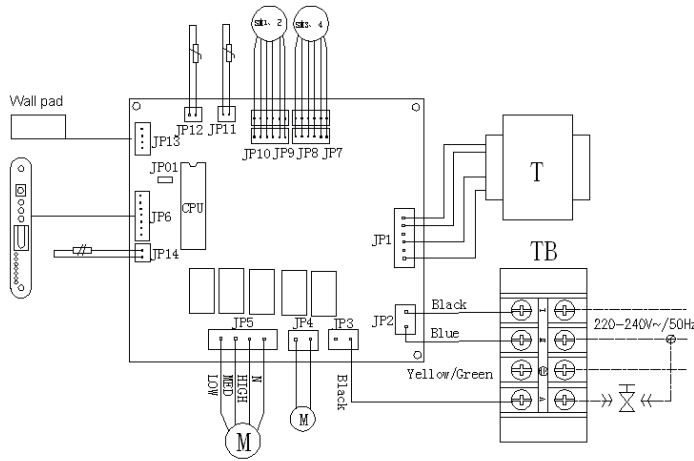


Wiring Diagram

Model for ULN 300~500



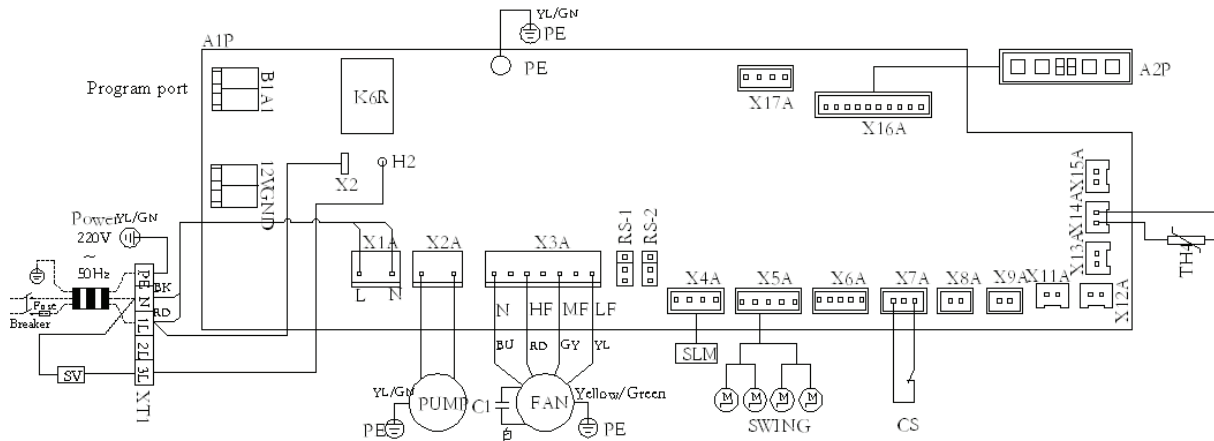
Legend:

- JP01---Open is with valve
Short is without valve
- JP1---Transformer
- JP2---Power supply
- JP3---2-way valve
- JP4---Drainage pump
- JP5---Fan motor
- JP6---Remote receiver
- JP7---Stepping motor
- JP8---Stepping motor
- JP9---Stepping motor
- JP10---Stepping motor
- JP11---Room TEMP. sensor
- JP12---Indoor coil TEMP. sensor
- JP13---Wall pad
- JP14---Float switch

———— FACTORY WIRING

..... FIELD WIRING

Model for ULN 600~1000



Note:

- 1 filed wiring, connector
- 2 Wiring only allows copper wire
- 3 Only provides the solenoid valve control port, except solenoid valve

Legend:

- A1P---Controller
- PUMB---Pumb
- C1---Capacitor
- SLM---Remote control
- A2P---Receiving display circuit board
- FAN---Fan motor
- TH4---Ambient temperature
- CS---Water level switch
- XT1---Terminal block
- SWING---Swing motor